

EEC nr : e6\*94/20\*0144\*00

Valeur-D-waarde : 11.10 KN

Valeur-S-waarde ↓ : 85 kg

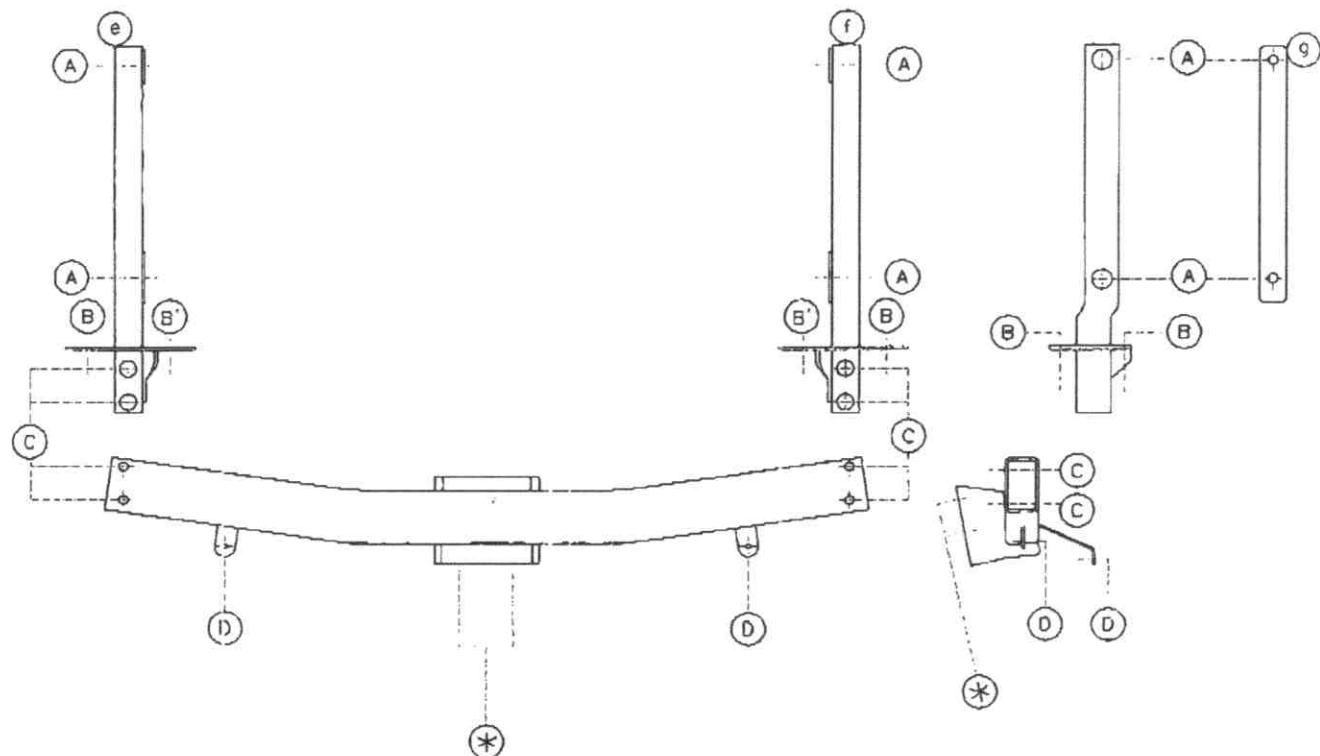
Max. → : 2100 kg

**Mercedes**
**N°:1142**
**Type : S-klasse (W220)**
**Model:1999-....**
**Samenstelling**

- 1 trekhaak ref.1142
- 1 bolstang T43L000 of T35L000 esca.
- 4 bouten M12-40 + moeren
- 4 bouten M10-50 + moeren
- 2 bouten M10-40 + moeren
- 4 bouten M12-80/1.5
- 4 bouten M12-40
- 1 veiligheidsschakel
- 4 bouten M6-20 + moeren
- 4 rondsels 40-12-4
- 2 rondsels 32-13-3
- 4 rondsels 18-6-2
- 2 monteerstukken (-g)
- 1 monteerstuk (-e)
- 1 monteerstuk (-f)

**Composition**

- |   |      |      |
|---|------|------|
| 1 attelage ref.1142                       |      |      |
| (*) 1 tige-boule T43L000 ou T35L000 esca. | (*)  | (*)  |
| (A) 4 boulons M12-40 + écrous             | (A)  | (A)  |
| (B) 4 boulons M10-50 + écrous             | (B)  | (B)  |
| (B') 2 boulons M10-40 + écrous            | (B') | (B') |
| (C) 4 boulons M12-80/1.5                  | (C)  | (C)  |
| (*) 4 boulons M12-40                      | (*)  | (*)  |
| (*) 1 anneau de sécurité                  | (*)  | (*)  |
| (D) 4 boulons M6-20 + écrous              | (D)  | (D)  |
| (B) 4 rondelles 40-12-4                   | (B)  | (B)  |
| (B') 2 rondelles 32-13-3                  | (B') | (B') |
| (D) 4 rondelles 18-6-2                    | (D)  | (D)  |
| (A) 2 pièces de montage (-g)              | (A)  | (A)  |
| (C) 1 pièce de montage (-e)               | (C)  | (C)  |
| (C) 1 pièce de montage (-f)               | (C)  | (C)  |



# 1142 Mercedes S-klasse (W220) 1999

- 1) Remove the innercoating out of the trunk, remove the battery and make the left side of the trunk also free.
- 2) Loosen the exhaust on the rubbers and disassemble the heatshields and bumper. Remove the metal buffer beam definitive.
- 3) Remove the 2 filled pieces between the crossbeam and the chassis. Make an opening in the middle so that mounting pieces (-e) and (-f) can shove.  
First drill the points (A) in the inside of the chassis beams, these points are marked by an indentation in the plate. Drill with  $\varnothing 14$  mm. Shove the mounting pieces (-e) and (-f) in the openings of the chassis with the filled pieces in between, so that points (B) are fitting with the drillings of the attached points of the bumper, place the mounting plates (-g) at the outside against the chassis beams and bring in the bolts, but do not tighten anything yet.
- 4) Now place the tow bar with the points (C) on (C) of mounting pieces (-e) and (-f) and bring in the bolts and washers, tighten everything firmly. The bumper will be attached on the points (D) of the tow bar. Fasten the exhaust and heatshields.
- 5) Assemble (\*) and tighten everything firmly.

1 tow bar ref.1142	
1 ball T43L000 or T:5L000 escam.	(*)
4 bolts M12x40 + nuts	(A)
6 bolts M10x50 + nuts	(B)
4 bolts M12x35	(*)
4 bolts M6x20 + nuts	(D)
4 washers 40x12x4	(C)
2 mounting pieces (-g)	(A)
1 mounting piece (-e)	(C)
1 mounting piece (-f)	(C)